



east  
side

■ PEPPERCORN HILL ■

# STAGE 7A LAND RELEASE



PEPPERCORN HILL

 ANOTHER DENNIS FAMILY  
COMMUNITY



# east Side

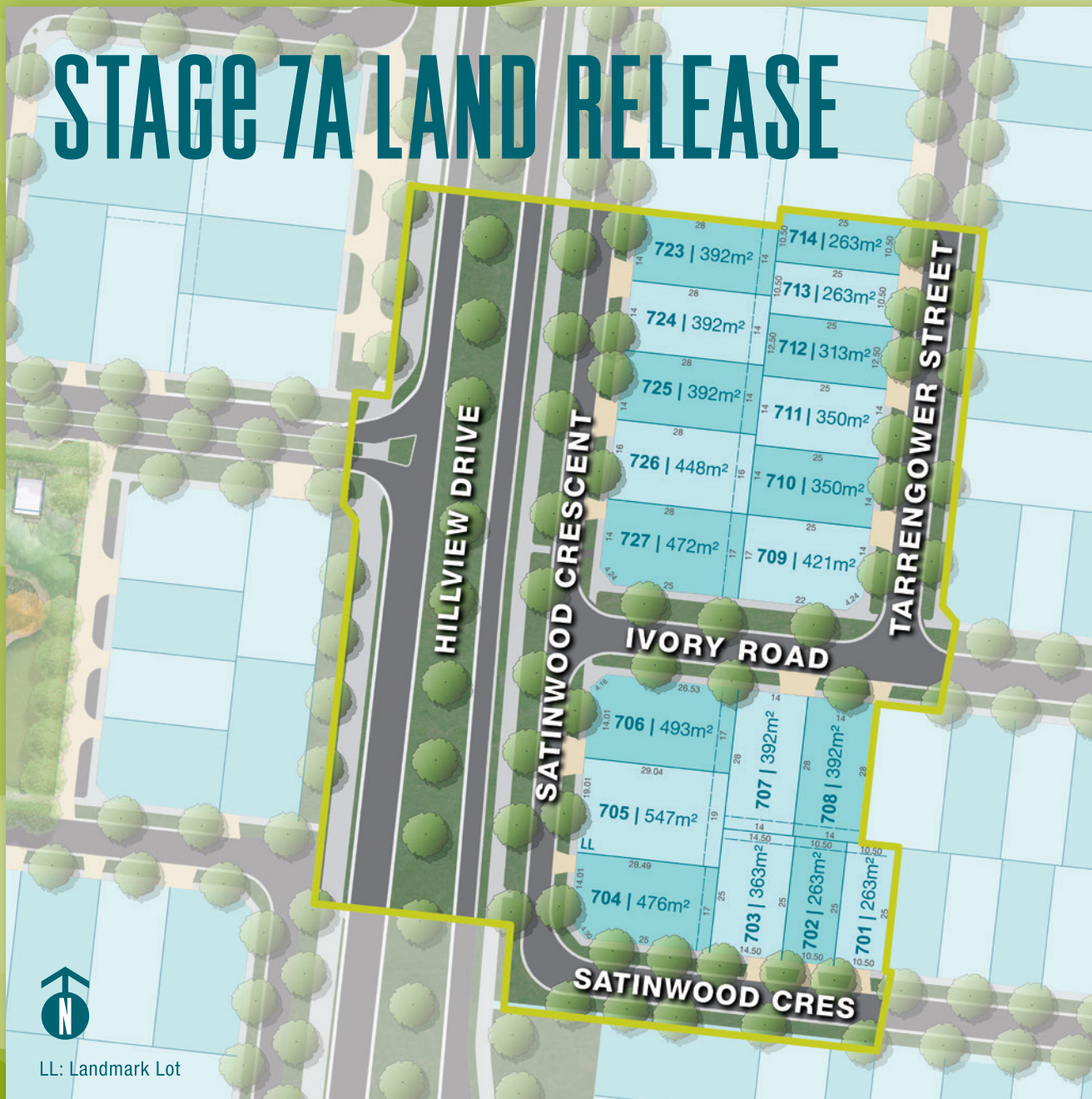
PEPPERCORN HILL

Centrally positioned within Peppercorn Hill estate, Eastside is a precinct that promises its residents affordable living options without compromising quality of life. It features two planned neighbourhood parks and is linked by the walking paths and bike trails that connect the whole estate.

At Peppercorn Hill, we have planned amenities for all lifestyles and ages. The future promises shopping centres and a choice of schools, extensive linked paths and creekside reserves - all designed to make living at Peppercorn Hill a big step up from the ordinary.



# STAGE 7A LAND RELEASE



LL: Landmark Lot

## STAGE FEATURES:

- A wide range of lot sizes to choose from: 263m<sup>2</sup> – 547m<sup>2</sup>
- Close to future local convenience centre
- Within easy walking distance to multiple future neighbourhood parks
- Easy access to Donnybrook Road
- Walkable access to Darebin Creek and future wetlands

## ESTATE FEATURES:

- Over 50 hectares of open space and parkland
- 25km of walking paths and bike trails throughout the estate
- Affordable House and Land Packages from Melbourne's best builders

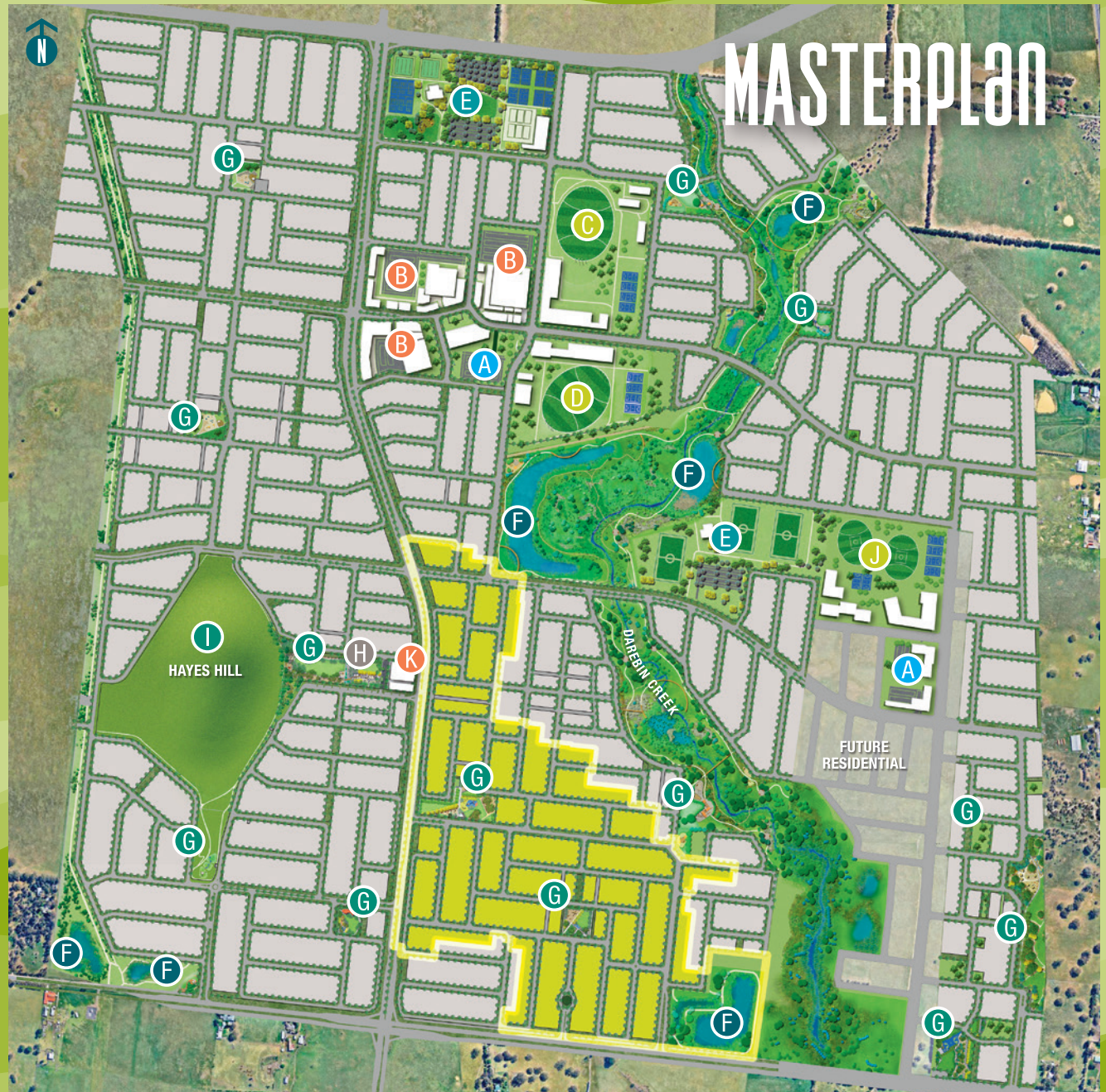
## LOCAL AMENITY:

- Donnybrook Railway Station only 3.2km away
- 1km (approx.) from nearby Hume Anglican Grammar (Opening in 2019)
- Schools, shops and medical facilities within 15 minutes of Peppercorn Hill

- A** Future Community Centre
- B** Future Town Centre including Supermarket and Retail Shops
- C** Proposed Government Secondary School
- D** Proposed Non-Government Secondary School
- E** Future Sports Fields and Recreational Space
- F** Future Wetlands
- G** Future Neighbourhood Parks
- H** Heritage Buildings
- I** Hayes Hill
- J** Proposed Primary School
- K** Local Convenience Centre



1145 DONNYBROOK ROAD  
 DONNYBROOK VIC 3064  
**1300 266 291**  
 PEPPERCORNHILL.COM.AU



DFC (Woodstock) Pty Ltd is the Project Manager for the Peppercorn Hill Estate. Images, plans, maps, measurements and other information is for general illustration purposes only and are not to scale. Actual lots, stages, facilities, amenities, infrastructure and their configuration are subject to statutory approval and may change. The Peppercorn Hill name is a registered trade mark used under licence © 2019.