

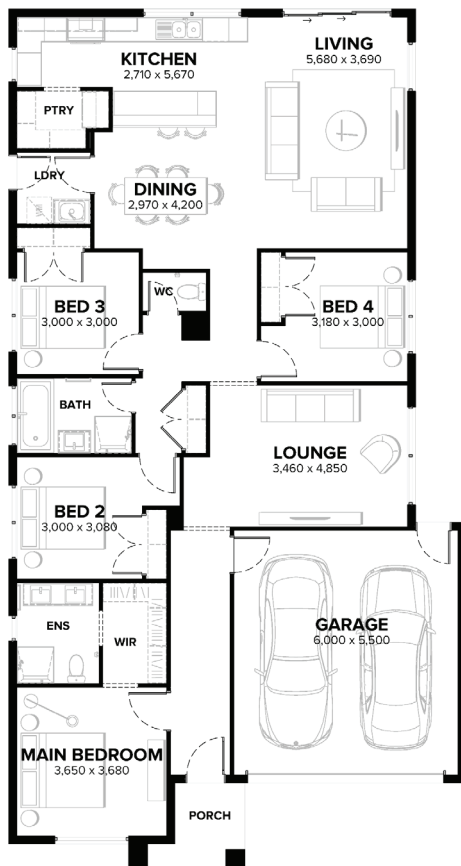
House & Land Package

ARDEN
HOMES



RUBY 23 | HUXLEY - HEBEL FACADE
LOT 30422 HOPETOUN CRESCENT, DONNYBROOK
WOODLANDS AT PEPPERCORN HILL ESTATE

HOUSE & LAND PACKAGE
\$782,046*



 **4**  **2**  **2** **LOT SIZE 350m²**

UNRIVALLED INCLUSIONS

- 7 star energy rating
- All-electric home
- Rendered hebel or brick facade
- COLORBOND® steel roof or concrete roof tiles
- 6.6KW solar PV system
- Reverse-cycle heating and cooling
- Premium flooring throughout
- 40mm Caesarstone Mineral edge to island benchtop
- 20mm Caesarstone Mineral benchtops to remainder of kitchen, ensuite(s), bathroom(s) and laundry
- Fisher & Paykel appliances
- Double bowl undermount sink in kitchen
- Double glazed windows

CONTACT Scott Caton 0435 611 383

ardenhomes.com.au

WOODLANDS
AT PEPPERCORN HILL

The advertised package price shown includes the \$20k discount from Arden Homes. Arden Homes will provide a construction contract for the house and separately the owners will enter into a contract to purchase land directly from the landowner. This advertised offer is subject to availability, statutory approval and a successful settled land contract. Arden Homes reserves the right to change prices or inclusions advertised without notice. This package is based off a standard floorplan. Amendments may be required to the facade and/or house to comply with building regulatory setbacks and/or developer requirements. For more detailed home pricing, including details about the standard inclusions for the house and optional upgrades and variations, please talk to one of our consultants. Images shown in this brochure may depict upgraded fixtures, finishes and features including items not supplied by Arden Homes such as alfresco decking, internal and external fireplaces, window and house furnishings and landscaping. *For details on the "Live Smarter & Save" promotion and our "Conveyancing Covered" offer through MyChoice Conveyancing, visit <https://ardenhomes.com.au/terms-and-conditions/>. CDB-U 48276 and