



SABA 250

\$657,500

**LOT 2002 PEPPERCORN HILL ESTATE
Donnybrook**

4  **2**  **2** 

Mimosa Homes Proudly Presents

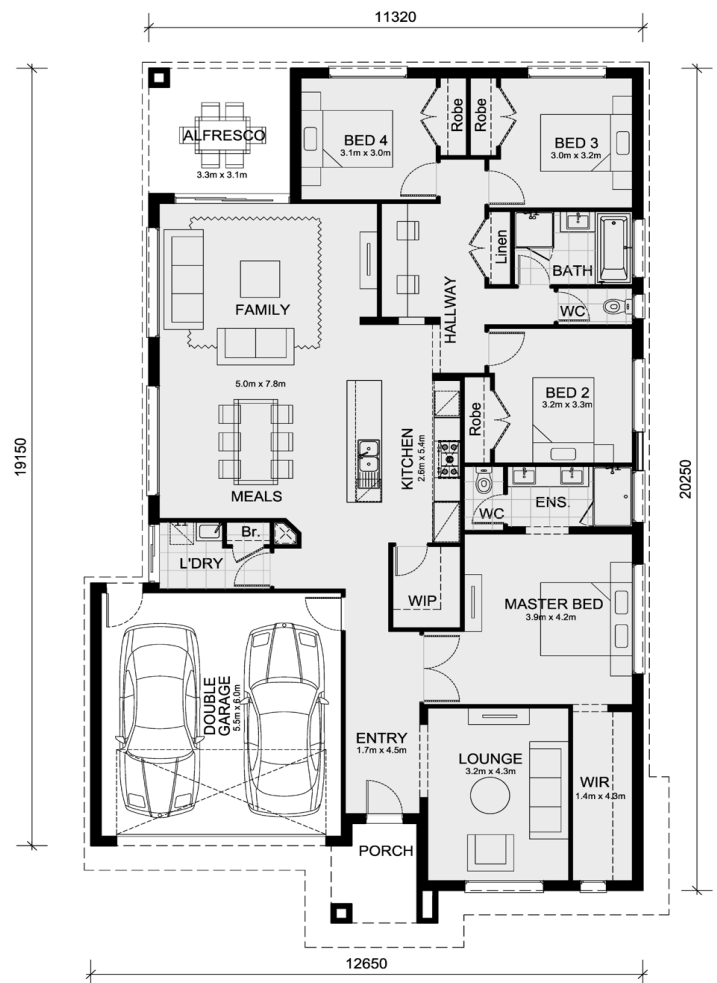
The Saba 250 House and Land Package(TITLED LAND)

* Experience The Mimosa Homes Difference!

* Mimosa Homes Added Value Inclusions:

- Inclusive of site costs & connections with H1 class slab as per standard inclusions!
 - Range of facades including feature render!
 - Quality floor coverings throughout entire home!
 - Higher ceilings 2550mm!
 - Downlights to living areas!
 - Stone bench top to kitchen!
 - 900mm S/S upright oven and cook top with S/S canopy rangehood!
 - Stainless steel Dishwasher and Microwave with trim kit!
 - Overhead cupboards & wine rack! (Design specific)
 - Remote control panel sectional lift garage door!
 - 6 star energy with solar hot water!
 - Flexible floor plans & so much more!
 - All Developer and Council Guidelines Included
- CALL BUILDER DIRECT: SUMIT SEKHRI: 0433 001 594

All plans and facades are indicative concepts only



Area Details

Land Size 392sqm Building Size 232sqm

Contact: Sumit Sekhri

sumit@mimosahomes.com.au

0433 001 594

www.mimosahomes.com.au

Disclaimer: Land availability and pricing is subject to the development availability. Mimosa Homes reserves the right to amend specifications and price without notice. All plans and facades are indicative concepts only, and are not intended to be accurate depictions of the building, fencing, paths, driveways or landscaping and are not necessarily to scale all dimensions are approximate (refer to working drawings). Package prices are based on standard facades and standard inclusions.