



SABA 250

\$731,800

**LOT 2336 PEPPERCORN HILL ESTATE
Donnybrook**



Mimosa Homes Proudly Presents

The Saba 250 House and Land Package(TITLED LAND)

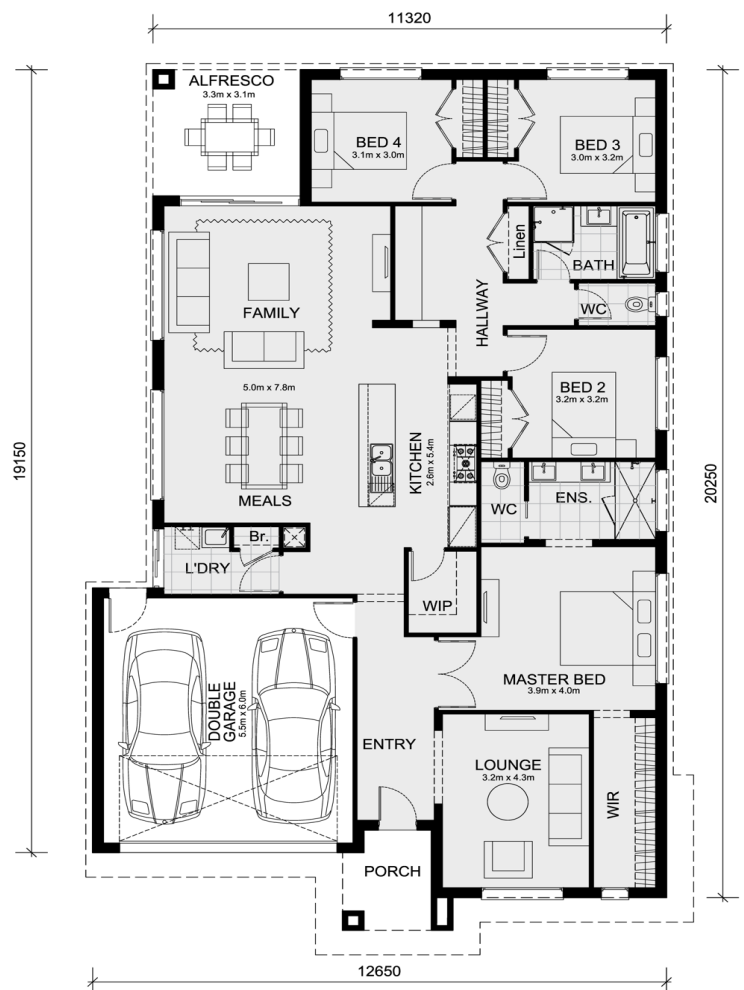
* NCC Compliant Floorplan

* Mimosa Homes Added Value Inclusions:

- Inclusive of site costs & connections with H1 class slab as per standard inclusions!
- Quality floor coverings throughout entire home!
- Higher ceilings 2550mm to ground floor!
- Double Glazed Awning windows
- Downlights to living areas!
- Vitrified Compact Surface benchtop to kitchen!
- 900mm S/S upright oven and cook top with S/S canopy rangehood!
- Stainless steel Dishwasher and Microwave with trim kit!
- Overhead cupboards & wine rack! (Design specific)
- Remote control panel sectional lift garage door!
- 7 star energy with solar hot water!
- Flexible floor plans & so much more!
- All Developer and Council Requirements included.

CALL BUILDER DIRECT: SUMIT SEKHRI: 0433 001 594

All plans and facades are indicative concepts only



Area Details

Land Size 468sqm Building Size 235sqm

Contact: Sumit Sekhri
sumit@mimosahomes.com.au

0433 001 594
www.mimosahomes.com.au