



**Peppercorn Hill Estate**  
Batehaven Crescent, Donnybrook  
Lot 2825

**Facade:** Urban

**House:** 25.85 sq **Land:** 350 m2

 4
  3
  3
  2

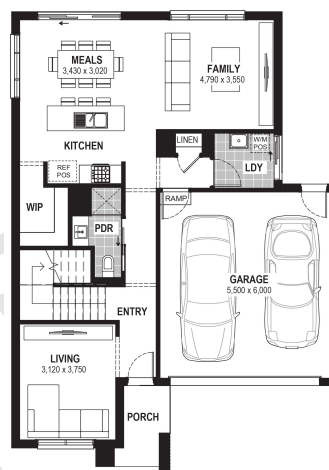
## Nolan 26

### Inclusions

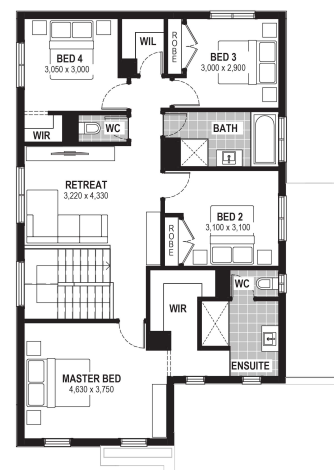
- Truecore Steel House Frame
- Colorbond Steel Roof (with Sarking)
- High Performance (uPVC) Double Glazed Safety Glass Windows & Doors
- 7 Star Energy Efficient to all orientations
- 7 x 440w Panels & 3KW Inverter (single phase)
- Bushfire Compliance to BAL 12.5
- 50 Year Structural Guarantee
- NCC Compliant
- Range of stylish colour schemes
- Overhead Cabinetry to Kitchen
- Tiled Shower Bases
- Laundry Cabinetry
- Remote Garage Door with Openers
- 2550 Ceiling Height
- Council & Developer Guidelines Included
- Deluxe Electrical Pack
- Flooring (Carpet & Laminate)
- Stone Benchtops throughout

### Contact:

Nathan Xuereb  
0419 515 096  
houseandland@jgking.com.au



GROUND FLOOR



FIRST FLOOR