



FOR ILLUSTRATION PURPOSES ONLY

## EDEN 15.5

Monsanto Facade



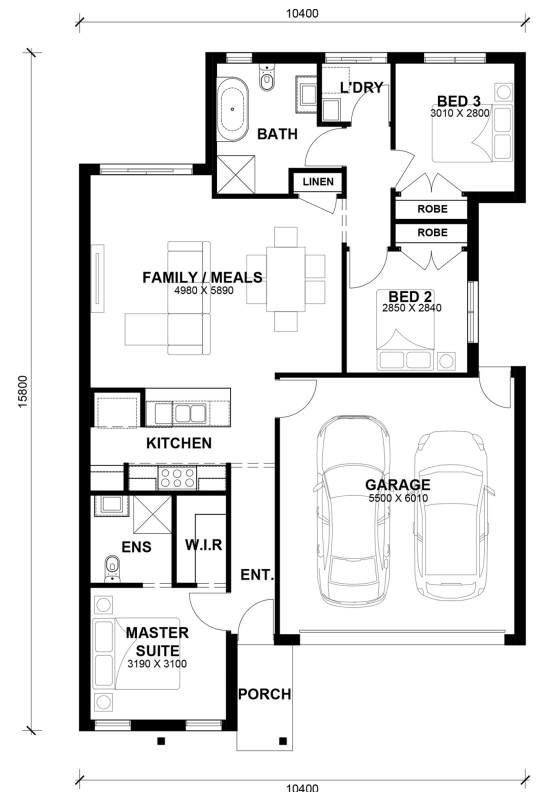
# \$559,190

Lot 3332 Conway Street  
Donnybrook (Peppercorn Hill Estate)

<b>Lot Size:</b>	263m <sup>2</sup>	<b>House Size:</b>	15.50sq
<b>Lot Price:</b>	\$278,000	<b>House Price:</b>	\$281,190

### PACKAGE INCLUSIONS :

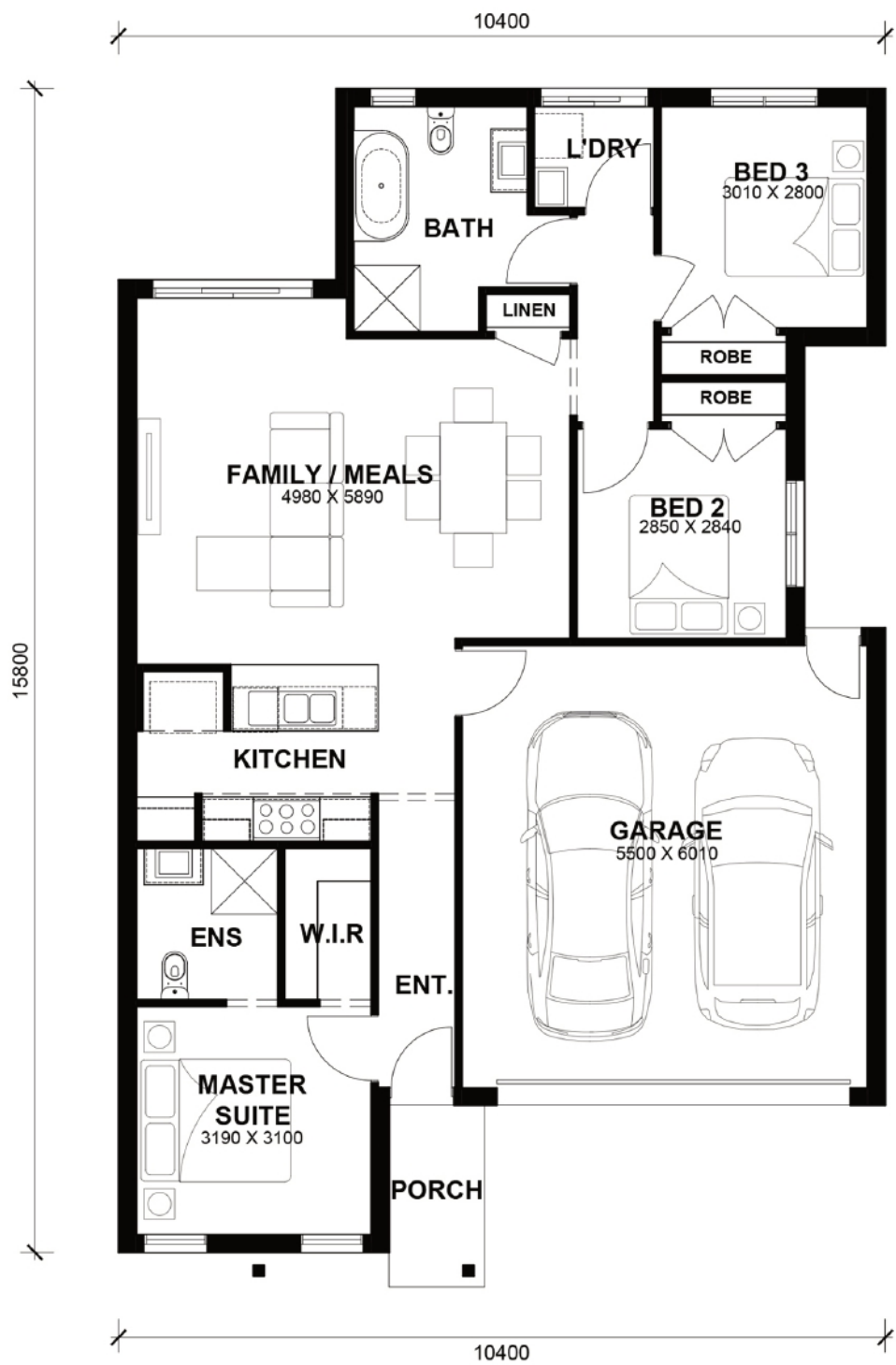
- 2.2kw Solar System
- Double Glazed Windows.
- 20mm Stone Benchtops Throughout.
- 2590mm High Ceilings Throughout.
- Ducted Heating.
- LED Tri-Colour Downlights Throughout.
- Glazed Porcelain Tiles To All Wet Areas (Including Showerbase).
- Soft Closing Drawers & Doors To All Cabinets.
- 900mm stainless steel appliances & 600mm Dishwasher (Design Specific).
- 215L Heat Pump Hot water Service.
- Back to Wall freestanding bath tub (size specific).



# Eden 15.5



LOT WIDTH LOT DEPTH  
10.5m<sup>+</sup> 21m<sup>+</sup>



## TOTAL AREAS

FAMILY / MEALS	4980mm x 5980mm	GARAGE	5500mm x 6010mm	TOTAL	143.12m <sup>2</sup>	15.4lsq
MASTER SUITE	3190mm x 3100mm					
BED 2	2850mm x 2840mm			EXTERIOR LENGTH		15,800
BED 3	3010mm x 2800mm			EXTERIOR WIDTH		10,400

House size on brochure is based on the Avalon facade. Size may vary dependant on facade. Please refer to working drawings for complete dimensions.