



SAVE UP TO \$85K*



EXCLUSIVE

fixed price

\$742,600*

Flooring from \$4,999*

*T&C's apply

Images for illustrative purposes only & may depict upgrade options available at additional charges such as lighting, window furnishings, timber look garage door & timber windows. Pricing also excludes features not supplied by Carlisle, inc fencing, landscaping, letterbox, decking & driveway. Façade details inc entry door, window sizes & placements may vary between house types & sizes. Refer to working drawings for specific locations and sizes.

Live Like A Star Inclusions**

Build your dream family home!

Includes a huge list of standard inclusions

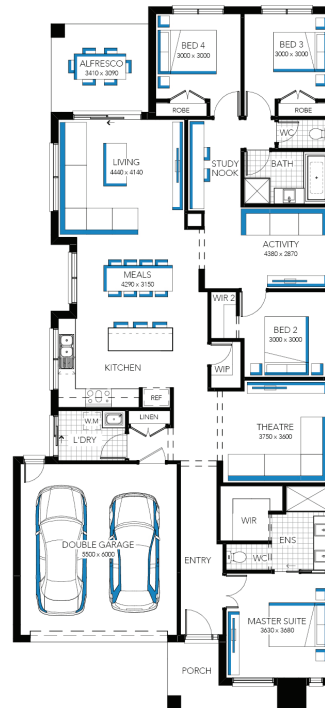
Plus 'Live Like a Star' with our luxury promotional inclusions**

- ✓ Fixed price site costs and connections
- ✓ Developer and council requirements
- ✓ 20mm Caesarstone to kitchen benchtop
- ✓ Fisher & Paykel kitchen appliances
- ✓ Clear glass splashback or tiles to kitchen
- ✓ Opulent bathroom fit-out
- ✓ 20mm Caesarstone to bathroom and ensuite(s) benchtops
- ✓ Laundry fit-out
- ✓ Double glazing to windows
- ✓ Feature staircase balustrade
- ✓ LED lighting
- ✓ Upgraded H-Class slab
- ✓ Entertainer door
- ✓ \$5,000 off fully rendered Hebel facades*
- ✓ 7 star energy rating

Piermont 26 MK2, Riviera Façade



Lot 2227 (400m²) Peppercorn Hill, DONNYBROOK
Lot Orientation: EAST



FOR ENQUIRIES CONTACT:

Gurwinder Randhawa & Umme Merchant 0433 444 455 & 0481 310 052 | w: carlislehomes.com.au

1145 Donnybrook Road DONNYBROOK 3064

Inspire
CONTEMPORARY LIVING



*Fixed Price current as of 12/08/2024. *Pricing based on developer engineering plans & plan of subdivision. Hebel homes may be smaller than dimensions shown on the floorplan due to the external wall thickness, see working drawings for Hebel home dimensions. Confirm land prices and availability prior to purchase. Community Infrastructure Levy & Asset Protection not included in pricing and must be arranged directly by client with developer (where applicable). Subject to developer & council approval. Package Price does not include any costs associated with Developer's Corner Façade treatment requirements (which will be priced by Carlisle Homes by way of Post Contract Variation), stamp duty, government, legal or bank charges. Alterations may incur additional charges. Carlisle reserves the right to withdraw or amend pricing, inclusions and promo without notice. Bushfire (BAL) requirements will be credited back to the client if Carlisle Homes receives confirmation that the house is not being constructed in a BAL designated area. This cannot be confirmed until site survey and property information from relevant authorities is received. **'Live Like A Star' Promotion applies to new quotes and initial deposits on Carlisle's Inspire homes from 1 May 2024, and is not available in conjunction with any other offers. LED downlights will be located in electrical appointment. Double Glazing excludes entertainer door. *Your choice of Timber-look laminate (Categories 1 and 2) or Floor Tiles (Category 1) or Carpet (Carlisle Classic Range), \$4,999 for single storey homes, \$6,999 for double storey homes. *Hebel discount taken off full retail price. Speak to a Sales Consultant for further details or visit carlislehomes.com.au/disclaimer. Registered Building Practitioner ODB-U 50143.

#\$20,000 (inc GST) build discount is included in the above price, and will appear as a credit in the HIA Building Contract. To be eligible for the discount, commencement of building, as defined in the HIA Building Contract, must occur in 2024 with an Inspire home only. \$20,000 (inc GST) land rebate eligible with this offer and is not included in the above price and is subject to Developers T&C's. See a Sales Consultant for more information.