

Churchill 20



3



2



2

Lot 1936 Capella way, Donnybrook

FIXED PRICE

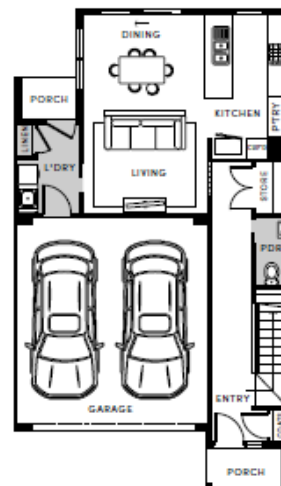
\$477,660

HOME SIZE 20 sq

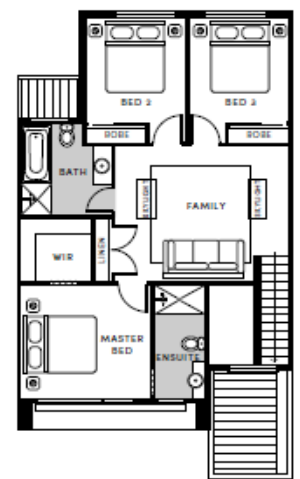
LAND SIZE 168 sqm

SOHO LIVING TURNKEY INCLUSIONS

- Architectural Façade
- 2590mm Ceiling heights to ground floor
- 20mm stone benchtops including waterfalls (Design specific)
- 20mm stone benchtop to ensuite and bathroom
- Landscaping to front and rear including letterbox, clothesline and fencing
- 600mm Fisher & Paykel appliances
- Mirrored splashback to kitchen
- LED Downlights
- Coloured concrete driveway and front path
- Flooring timber laminate and carpet
- Tiled shower bases
- Colorbond sectional garage door with dual remotes
- Ensuite, Bathroom and Toilet accessories



GROUND FLOOR



FIRST FLOOR